



Times of Shrewsbury



September 2022

COMMUNITY HONORING THE PAST

A call was put out by Tom Giffin to his Vermont Old Cemetery Association (VOCA) members to come to Cuttingsville on August 6 to spend the morning doing work in Laurel Glen Cemetery. Tom, who lives in Rutland, is both a Trustee of the Laurel Glen Cemetery Association of 1894 and President of the VOCA. More than a dozen VOCA volunteers from five counties responded. Some folks from Shrewsbury were there to help as well. Al Ridlon, Jr. deftly used his tractor to lift and reset heavy toppled and broken headstones. Mark Stewart brought his truck filled with sure pack, used to provide a firm foundation for the straightened markers. Tanner Stewart used his chain saw to prune branches from overgrown trees and bushes – other volunteers dragged them away. Gina Stewart, Elliott Stewart, Barbara Griffith (a master at headstone cleaning) and Barry Griffith also helped in multiple ways.

The Bowman Mausoleum was opened and given a thorough cleaning. No one present could recall the last time this was done. Volunteers Greg Durgin from Bellows Falls, Cora Willis Cooper from Bellows Falls and Rebecca Hougher from Fair Haven deserve special mention for their dedicated work on this project. As Grace Brigham remarked: "Even the whiskers on John Bowman were scrubbed with a toothbrush!"

As the day got warmer, the volunteers greatly appreciated the supply of water, lemonade and homemade cookies thoughtfully provided by Catherine Carrara and the Shrewsbury Historical Society. Thanks also to Ann and Al Ridlon, Sr. who staffed the SHS Museum and greeted guests there that day.

At noon, the doors of Laurel Hall were opened, and tours of the mansion provided. Answering the call to serve as tour guides were Grace Brigham, Liesbeth van der Heijden, Pam Monder, Donna Smith, and Nancy Ellery. Pam came dressed as a maid, and Nancy provided period costumes from her collection for others to wear. The guides were prepared with information about John Bowman and details about Laurel Hall. Those taking the tour were suitably impressed. The Association Trustees hope to build on this for future tours – including one scheduled for October 2. Mark your calendars!

Thanks to Tom Giffin for organizing this cemetery work day, and to all who participated. We can't name everyone who helped in this article but appreciate the efforts of one and all. We are scheduling another work party for 2023 and will provide particulars in future editions of the Times. Let us know if you want to help or have any questions about the property.

Article by Barry Griffith
Photos by Gina Stewart and Tom Giffin



NEWS FROM TOWN TREASURER

TAXES DUE OCTOBER 7

Payments can be mailed, placed in the drop box at the town office (to the left of the front door), made by credit card online at www.officialpayment.com (by October 5), or delivered to the town office. If you plan to pay in cash, please deliver directly to the treasurer.

Town Treasurer regular hours are every Monday from 9am to noon.

Additional days/times available for payments:

Saturday, October 1 10:00am to 12:00pm
Thursday, October 6 12:00pm to 3:00pm
Friday, October 7 12:00pm to 7:00pm

If you have not filed your Homestead Declaration, the state website at www.tax.vermont.gov/property-owners will direct you to the proper form and the Property Tax Adjustment form is also available. If you qualify, DEADLINE is October 15.

State of Vermont Tax Information for contact is:

Phone: (802) 828-2865 Toll Free: (866) 828-2865
Email: tax.individualincome@vermont.gov
Fax: (802) 828-2720

Thank you, and call if you have questions.

Linda McGuire, Treasurer
Town of Shrewsbury
9823 Cold River Rd, Shrewsbury, Vermont 05738
Shrewsburytreas@vermontel.net
Town Office 492-3558

Vermont State Senators:

Brian Collamore: bcollamore@leg.state.vt.us
Cheryl Hooker: chooker@leg.state.vt.us
Josh Terenzini jterenzini@leg.state.vt.us

Vermont State House of Representative:

Logan Nicoll: lnicoll@leg.state.vt.us

The Vermont General Assembly is in session January thru June. To view committee member-ships, bills that have been introduced, track each bill's progress, and review committee agendas go to www.leg.state.vt.us. During the week you can contact your legislator by leaving a message at the State House by calling 1-800-322-5616 or 828-2228 (the Sergeant-At-Arms' Office).

United States Senators:

Senator Patrick Leahy

www.leahy.senate.gov/contact
Vermont Office: (802) 229-0569
Washington office: (202) 224-4242

Senator Bernie Sanders

www.sanders.senate.gov/contact
Vermont Office: (800) 339-9834
Washington D. C. Office:
(202) 224-5141; Fax (202) 228-0776

United States House of Representative:

Representative Peter Welch

<https://welch.house.gov/contact>
Vermont Office: (802) 652-2450 or (888) 605-7270
Washington, D.C. Office: (202) 225-4115

Revised 8/1/2021

The Times of Shrewsbury

The *Times of Shrewsbury* is published monthly from February through December, and compiled by volunteers from material submitted by residents with the goal of informing townspeople of what is happening in Shrewsbury. The views and opinions expressed in articles are solely those of the author and not necessarily those of the editors.

All submissions must be accompanied by the name of the submitting person and are printed at the editors' discretion subject to editing for length and clarity. Letters to the Editor exceeding 350 words will be subject to editing for length. Any information piece or informational political letters (without specific party or vote appeal) will be subject to the guidelines previously described.

A writer of a letter that names a Shrewsbury resident or organization in a critical manner must get copies to the resident or organization, and to the *Times* by the 10th of the month prior to publication or it will not run. If the named person or organization indicates in writing to the writer and to the *Times* that they choose not to respond, the letter will run. If the named entity responds, the response and initial letter will run in the same issue.

There is no charge for: jokes, poems, nature reports, family event announcements, or feature articles or letters that are not commercial.

Articles and Advertisements: Deadline for submission is 5pm on the 20th of the month prior to publication; exceptions will be announced in the prior month's *Times*.

Ads in the *Times* are for area businesses, local non-profit events, and local ballot election advertisements.

Best Formats: Articles: Word or as an email message with no formatting. Photos: jpeg. Ads: jpeg or Word document.

Monthly advertising fees and relative sizes:

Full page	\$90	(7.5"w x 9.5"h)
Half page	\$50	(7.5"w x 4.5"h or 3.5"w x 9.5"h)
Quarter page	\$10	(7.5"w x 2.5" h; or, 3.5"wx 4.5"h)
Business card	\$5	(3.5"w x 2"h)
Classified ad	\$3	(15 words or less)

Payment due by the 20th of the month prior to publication.

Chryl Martin ~ Rich Biziak ~ Victoria Arthur
Times of Shrewsbury, P. O. Box 373, Cuttingsville, VT 05738

Email: shrewsburytimes@gmail.com Online: <http://www.shrewsburyhistoricalsociety.com>

SHREWSBURY COMMUNITY CALENDAR

Aug 26	5pm	*Outdoor Concert at the Meeting House: Rick Redington and the Luv (rain date Aug 28)
Aug 27	5:30pm	*Dinner and Dance with Community Blues Band sponsored by Shrewsbury Library
Aug 28	7pm	*Science Book Club discussion group
Sept 2	5pm	*Outdoor Concert at the Meeting House: Will Patton Ensemble (no rain date)
Sept 3	5-7pm	*Community Picnic Party outside the Meeting House (no rain date) sponsored by SAGE
Sept. 4	9am-12pm	*Garden Work Party at the Mountain School
Sept. 7	3-5:30pm	*Garden Work Party at the Mountain School
Sep 9	5:30-7:30pm	*Harvest Moon program sponsored by Shrewsbury Conservation Commission
Sept 10	5pm	*Outdoor Concert at the Meeting House: Plumb Bobs (rain date Sept. 11)
Sept 17	11am	*SHREWSBURY DAY (see centerfold for more information and schedule of events)
Sept 18	4pm	*Famous Books Book Club meeting at the Library
Sept 23	4-6pm	*Wine Tasting at Pierce's Store
Sept 24	9am	*Annual Book Sales under the tent at the Library
Sept 25	7pm	*Science Book club via Zoom
Sept 30	7pm	*Making the Most of Shrewsbury Winters program at the Library
Oct 1	5:30-7:30pm	*Chili Cook Off at Pierce's Store (Rain or Shine)
Oct 1&2	10am-5pm	Vermont Crafts Council Open Studio Weekend
Oct 7		*Taxes Due

*see elsewhere in newsletter for details

TIMES OF SHREWSBURY
online at
www.shrewsburyhistoricalsociety.com



Deadline for submission to *Times of Shrewsbury* is by 5:00pm on the 20th of each month.

REGULAR MEETINGS and EVENTS

Board of Selectman Meeting	1 st & 3 rd Wednesdays – 6:30pm at Town Office
Bone Builders	Tuesdays & Thursdays – 10am at Meeting House
Development Review Board	4 th Wed -7pm at Town Office; check town website for agenda
Library Trustees Meeting	2 nd Tuesday – 7pm at Shrewsbury Library
Mill River Unified Union School Board Mtg	1 st Wed 7pm @ MRHS & 3 rd Wed. 7pm location TBA
Planning Commission	2n & 4th Tuesdays 7pm at Town Office
Religious Society of Friends (Quakers)	Sundays – 10am via Zoom; contact wildernessfriends@gmail.com
Shrewsbury Community Church	Sundays – 10:30am - Worship service and Kids Funday Program
Shrewsbury Conservation Commission	2 nd Tuesday – 5:15pm at 450 Frank Lord Road until further notice.
Shrewsbury Historical Society	Open Sundays 1-3pm until October 30
Shrewsbury Historical Society Museum	Open Sundays 1-3pm until October 30
Shrewsbury Singers	Currently taking a break
Shrewsbury Sno-Birds	2 nd Tuesday – 7pm at Southside Steakhouse in Rutland
Shrewsbury Volunteer Fire Department	Thursdays – 7pm at the Cuttingsville Station

Shrewsbury Town Website: www.shrewsburyvt.org

Clerk's Office	492-3511 Mon – Thurs 9am – 3pm; Closed Friday
Town Garage	492-3656 (Follow prompts to report roadway blockage on non-work days)
Listers	492-2009 available by appointment
Treasurer's Office	492-3558 Monday 9am-11am
Transfer Station	Sunday 8am-4pm ~ Wednesdays 12noon-6pm
Library	492-3410 Hours: Mon 10am-12noon; Tues 7-9pm; Wed 10am-5pm & 7-9pm; Thurs 7-9pm; Fri 10-12noon; Sat 10am-12noon
Meeting House	492-6050 Reservations: 492-3361 or julanne@vermontel.net
News Flash Email List:	vtbenbeano@gmail.com or benbeano@vermontel.net [Urgent and reminder news info]

Cuttingsville Post Office 492-3585 Window Hours Mon-Fri 7:30am-10:30am & 11:30am-2:30pm; Sat 8am-11am.
Lobby Hours Mon- Fri 7:00am-7:00pm and Sat 7:00am-4pm

Animal Control Officer: Vacant (Contact a Selectboard member)	1 st Constable: TBA	Game Warden: Tim Carey 793-2776
Emergency Management Aaron Korzun 492-3362	Green Mountain Power outage 1-800-451-2877	
Medical-Police-Fire Emergency Dial 911	Ambulance 773-1700	Rutland Hospital 775-7111

[Updated 8/17/22]

SHREWSBURY SELECTBOARD MINUTES

The Selectboard meets the 1st and 3rd Wednesday at 7pm at the Town Office.

August 3, 2022: Selectboard Meeting Minutes

Present at the meeting: Selectboard members: Aaron Korzun, Francis Wyatt, Steven Nicholson. Treasurer: Linda McGuire. Assistant Town Clerk: Betsy Jesser.

Members of the Public: Michelle Greene, Todd Greene, Taylor Greene

The meeting was convened at 6:34pm

Agenda: Motion made by A. Korzun to follow the agenda: F. Wyatt seconded. All in favor, motion approved.

Town Office Dropbox: Linda McGuire read a memo that she drafted. Betsy Jesser asked what's the difference between bringing mail from the mailbox versus getting items from the dropbox. Procedure for dropbox: When the Clerk or Assistant Clerk find mail for the Treasurer in the dropbox they will put the mail into the Treasurer's filing cabinet in the vault. They will also treat regular mail the same. Listers are only to take mail from the dropbox that is addressed to them and leave all other mail. Linda McGuire and Betsy Jesser agree to this procedure.

When Listers collect the mail from the Post Office, they are to leave all other mail other than their own, if the Post office will allow that.

Door between two parts of the Town Office: Linda would like for it to be locked. We will table this discussion to another meeting.

Appointment-Board of Auditors: Aaron made a motion to appoint Michelle Greene to the position of Auditor. S. Nicholson seconded. Approved.

Mountain School Pond Dam: A. Korzun met with Todd Manice, State of Vermont Dams; Julie Butler, U.S. Govt.; Jamie Carrara, Road Commissioner; Nick Greene and Machaela Maniery, landowners of the dam. The dam was put in in the 30s. It was decided after a State inspection that the dam is in poor shape and something has to be done with it. They decided to begin the process of decommissioning the dam. The Army Corps of Engineers will also be involved.

Kinsman Hill Repeater: Nothing new to report regarding the lease. S. Nicholson still waiting to get an appointment with CVC.

ARPA Funds: The new Town Office printer is installed and will be paid for from the ARPA funds.

Town Website: No new information to report.

New Business: Need a new tractor for mowing. Discussed the first few weeks of the Sheriff's Dept patrolling Town.

Review Minutes: A. Korzun made a motion to accept the 7/20/2022 Selectboard meeting minutes. Seconded by S. Nicholson. Approved.

Review Orders: F. Wyatt made a motion to approve Selectboard Orders #8 for \$7,414.61 and Road Orders #8 for \$9,837.12. Seconded by A. Korzun. Approved. Adjourned at 8:47pm

Respectfully submitted, Francis Wyatt

These minutes are unofficial until approved by the Selectboard at the next regularly scheduled meeting.

August 17, 2022: Selectboard Meeting Minutes

Present at meeting: Selectboard members: Aaron Korzun, Francis Wyatt, Steven Nicholson. Auditor: Rich Biziak. Lister: Sharon Winnicki

Members of the Public: None.

The meeting was convened at 6:30pm

Agenda: Motion made by A. Korzun to follow the agenda with the following addition: Special Event Permit. F. Wyatt seconded. All in favor, motion approved.

Town Audit RFP: Sent RFPs to four entities. We received responses from 3 of them. A.M. Peisch & Company responded that they were too busy. Bid from RHR Smith and Company for \$11,800. Bid from Sullivan, Powers and Company for \$25,000. Haven't heard from the fourth. S. Nicholson made a motion to accept the bid from RHR Smith and Company for \$11,800. A. Korzun seconded. Approved.

Town Office Security: Sharon Winnicki submitted a letter regarding locking of the door between the two parts of the Town Office. The door between the two parts cannot be locked per state code. Discussed the possibility of building a wall to separate the stage section and that could be the Treasurer's area that could be locked. A. Korzun suggested that we could change the key code for the front door. A list needs to be compiled of who needs to know the code before the code is changed.

ARPA Funds: Repeater Improvements on Kinsman Hill: CV Communications suggested improved charge controller, upgraded solar panels, and possibly upgraded wind turbine. S. Nicholson is updating the new lease agreement.

Special Event Permit: A. Korzun made a motion to approve a Special Event Permit for Outer Limits Brewing. S. Nicholson seconded. Approved.

New Business: Sharon Winnicki informed us that there was a Current Use issue with corrupt files. The file is fixed now. Sharon will wait to report future grand list changes once they are all done changing.

The Selectboard would like to thank Mark Goodwin for stepping in as Presiding Election Officer and Betsy Jesser and Sharon Winnicki for their extra work on the primary election.

Review Minutes: A. Korzun made a motion to accept the 8/3/2022 Selectboard meeting minutes. Seconded by S. Nicholson. Approved.

Review Orders: F. Wyatt made a motion to approve Selectboard Orders #8a for \$1,056.82 and Road Orders #8a for \$12,038.33. Seconded by A. Korzun. Approved.

Adjourned at 8:21pm

Respectfully submitted, Francis Wyatt

These minutes are unofficial until approved by the Selectboard at the next regularly scheduled meeting.

Editor's Note: The minutes have been edited for brevity but not content. For complete minutes, go to the Town website www.shrewsburyvt.org

August 9, 2022

Vermont State Primary Elections Results

246 voters 942 eligible to vote
(There were no votes on Progressive Ballot)

DEMOCRAT BALLOT:

REPUBLICAN BALLOT

U.S. SENATOR

ISAAC EVANS-FRANTZ – 12
NIKI THRAN – 12
PETER WELCH – 149
WRITE-IN – 1

U.S. SENATOR

GERALD MALLOY – 25
MYERS MERMEL – 14
CHRISTINA NOLAN – 31
WRITE-IN – 0

REPRESENTATIVE TO CONGRESS

BECCA BALINT – 113
SIANAY CHASE CLIFFORD – 3
MOLLY GRAY – 56
LOUIS MEYERS – 2
WRITE-IN – 0

REPRESENTATIVE TO CONGRESS

LIAM MADDEN – 26
ERICKA BUNDY REDIC – 15
ANYA TYNIO – 25
WRITE-IN – 0

GOVERNOR

BRENDA SIEGEL – 95
WRITE-IN – 11

GOVERNOR

STEPHEN C. BELLOWES – 14
PETER DUVAL – 6
PHIL SCOTT – 46
WRITE-IN – 1

LIEUTENANT GOVERNOR

CHARLIE KIMBELL – 9
PATRICIA PRESTON – 10
KITTY TOLL – 51
DAVID ZUCKERMAN – 96
WRITE-IN – 1

LIEUTENANT GOVERNOR

JOE BENNING – 20
GREGORY M. THAYER – 48
WRITE-IN – 1

STATE TREASURER

MIKE PIECIAK – 152
WRITE-IN – 0

STATE TREASURER

H. BROOKE PAIGE – 48
WRITE-IN – 1

SECRETARY OF STATE

SARAH COPELAND HANZAS – 65
JOHN ODUM – 29
CHRIS WINTERS – 49
WRITE-IN – 0

SECRETARY OF STATE

H. BROOKE PAIGE – 47
WRITE-IN – 0

AUDITOR OF ACCOUNTS

DOUG HOFFER – 144
WRITE-IN – 0

AUDITOR OF ACCOUNTS

H. BROOKE PAIGE – 42
WRITE-IN – 1

ATTORNEY GENERAL

CHARITY R. CLARK – 106
RORY THIBAUT – 43
WRITE-IN – 0

ATTORNEY GENERAL

H. BROOKE PAIGE – 41
WRITE-IN – 2

STATE SENATOR

BRIDGETTE REMINGTON – 97
ANNA TADIO – 113
WRITE-IN – 16

STATE SENATOR

BRIAN "BC" COLLAMORE – 61
DAVID "DAVE" WEEKS – 43
TERRY K. WILLIAMS – 42
WRITE-IN – 2

STATE REPRESENTATIVE

LOGAN NICOLL – 154
WRITE-IN – 1

STATE REPRESENTATIVE

WRITE-IN – 4

PROBATE JUDGE

WRITE-IN – 12

PROBATE JUDGE

KARL C. ANDERSON – 53
WRITE-IN – 0

ASSISTANT JUDGE

WRITE-IN – 14

ASSISTANT JUDGE

STEPHEN P. BERNARD SR. – 51
WRITE-IN – 0

STATE'S ATTORNEY

IAN SULLIVAN – 117
WRITE-IN – 0

STATE'S ATTORNEY

WRITE-IN – 3

SHERIFF

WRITE-IN – 9

SHERIFF

DAVID J. FOX – 55
WRITE-IN – 1

HIGH BAILIFF

WRITE-IN – 8

HIGH BAILIFF

JONATHAN "J.J." BIXBY – 51
WRITE-IN – 1

COVID Interferes with Election Day

Town Clerk Megan LaChance returned from vacation with Covid. When it was known on Sunday before the August 9 Election Day, former Town Clerk Mark Goodwin and right hand election official Betsy Jessor went into "election shuffle in high gear" after Mark was appointed "presiding officer for the 2022 state primary" by the Board of Civil Authority at an emergency meeting on Sunday. Betsy says, "we had a seamless day! Mark came on board to help, and it was like old times." ~C.Martin

NEWS FROM MONTPELIER

Apologies for missing the last couple months, I intended to provide more context for at least some of the bills I worked on last session, but as I mentioned in my June article we've had a lot on our calendar this summer, and weathered some unplanned events as well. My wife and I did welcome our second baby in June! Another girl! Born June 12, Frankie Louise Nicoll. Then we all got sick with COVID in July, including the baby. Luckily it didn't hit any of us too hard, but even still none of us left the couch much for almost 2 weeks.

To recap the remaining things the Governor acted on since my June article, I would say there were not too many surprises. He did sign the budget, which I was happy with. As I mentioned before, he made some waves in April by seemingly hinting that he may veto the budget, so I was glad we were able to avoid that outcome. To get the budget through the committee process and reach agreement between the various policy committees in each chamber and then between the House and Senate chambers themselves is a process to behold, and feels like a miracle every year. The thought of all that work being thrown out by the stroke of a pen is frightening, and he has done it before without much notice.

As happy as I was that he did not veto the budget, the Governor really disappointed me by vetoing two other bills that I really cared about, H505 and H534.

H534 would have expanded the non-violent crimes eligible for expungement under the current process. H505 would have finally eliminated the pointless and arguably racist powder cocaine/crack cocaine sentencing disparity in VT law, as well as set up a committee to study and advise the legislature on transitioning away from criminalizing people with substance use disorder. This is something I talk about a lot, personally I don't think we should be putting addicts in prison solely for low-level possession, I think we need to improve access to treatment as an alternative. That's how you end the cycle in my mind. That being said, I accept that not everyone is where I am on this issue, which is why this bill became a study, by a committee that would have included a representative from law enforcement as one of its members, that would have simply issued a report back to the legislature on potential policy options. It passed both chambers on voice vote, with very little opposition. This was a loss for the state, and suffice to say I'm still pretty upset about it three months later, and hope I am able to fight for a similar policy next January if I am re-elected in November.

As always feel free to reach out about any of this or anything else. In next month's article I plan to offer my thoughts on the constitutional amendments you will see on the ballot in November. Calling/texting my phone is always better than sending me an email. Thanks for all the support on primary day! Hope to see or talk to you soon!

*Logan Nicoll
State Representative (Ludlow, Mount Holly, Shrewsbury)
802-345-8430*



SHREWSBURY VOLUNTEER FIRE DEPARTMENT

That was quick! Wow! It seems like we were just looking forward to Summer, now we are preparing for the impressive Vermont Fall weather.

The SVFD responded to one call on the CCC Road for smoke in the area. It was determined an approved and PERMITTED burn was the source of the smoke.

Thursday nights are SVFD's scheduled meeting nights. We perform maintenance on our buildings, equipment and vehicles. We also plan and conduct drills. As part of the dry hydrant drill (testing) last month. We found two damaged hydrants. Some damage was related to vandalism, some was due to aging equipment and wear and tear. Dry hydrant testing serves two purposes. It checks that the hydrant is in good operating condition and it exposes all members to the different responsibilities related to connecting to a hydrant and operating the equipment.

We practiced using the SCBA (self-contained breathing apparatus) equipment. This equipment is also tested by the vendor annually to confirm it is in good operating condition and meets all NFPA standards. Drills are an important aspect of our routine. Drills ensure, familiarization of operating the vast amount of equipment related to fire fighting, how to maintain each piece, and confidence that it is ready to be utilized when our beepers go off!

We held Building and Truck Review committee meetings. The Building Committee reviews the maintenance needed to the current buildings and discuss future needs and repairs. Our stations needs are similar to owning a home! We had the furnaces cleaned, smoke and CO detectors tested, facilities cleaned and checked station equipment.

The Truck committee is reviewing our trucks. This committee is charged with reviewing the needs of the town, consider the conditions of existing equipment, and bringing proposals back to the department for the options available for the next replacement purchase.

There is much to do and to be accomplished at the SVFD. The needs vary and stretch beyond running into a burning building. Consider if you would like to serve with us. SVFD needs new members. This article provides just some information of what we do on a monthly basis. If you have an interest in becoming a member, contact any member or stop at either the Northam or Cuttingsville fire station any Thursday evening after 7pm. Enjoy the upcoming fall foliage and fresh crisp air and remember **STAY FIRE SAFE!!** ~Submitted by Jack Perry

Ham Supper Canceled for 2022

While we don't want to disappoint the community, there will not be a Ham Supper held this year. The Fire Dept Auxiliary has started to brainstorm new ideas for our efforts for a community function, so look for any announcements for 2023. Thank you for your continued support!

Submitted by Karly Carrara, Shrewsbury FD Auxiliary

2022 Volunteer of the Year

At the 65th Annual Meeting of the Okemo Valley Regional Chamber of Commerce, Alyssa Stewart, of Stewart Maple & Marketplace in Cuttingsville, was selected as a 2022 Volunteer of the Year for her efforts as the founding co-chair of the annual Best of Vermont Summer Festival Committee as well as her service on the chamber board of directors. The award was presented by Chamber Board President Gail Beardmore and Chamber Director Carol Lighthall.



The Okemo Valley Regional Chamber of Commerce is a not-for-profit, member-driven association and the voice of 300+ businesses and the communities of 12 towns & villages in South Central Vermont along the Scenic Route 100 Byway, surrounded by Okemo, Ascutney & Magic Mountains. OVRCC provides

advocacy, support, and unified regional marketing to promote and enhance businesses in the region, as well as the four-season economy. For info: info@yourplaceinvermont.com

For info on the Best of Vermont Summer Festival go to: <https://www.yourplaceinvermont.com/best-of-vermont-summer-festival>

Submitted by Carol Lighthall, Executive Director
;Photo by Donald Dill.

Employment Opportunity

Town of Shrewsbury is accepting applications for **Road Crew member**

Work includes: plowing, ditching, road repair, roadside mowing, culvert work, chainsaw operation, equipment maintenance, and other duties.

Benefits include 100% Town paid Medical and Dental insurance

A clean driving record, CDL Class B License, and ability to pass drug/alcohol test required.

Contact Jamie Carrara @ 492-3656



Late September & Early October: It's mating season for the moose, so watch out for them on the roads as they cross for action on the other side!



MAKING THE MOST of SHREWSBURY WINTERS

**FRIDAY, SEPTEMBER 30 @ 7pm
in the LIBRARY MEETING ROOM**

**NEWCOMERS,
OLD-TIMERS,
AND EVERYONE IN BETWEEN!**

PLEASE JOIN US for a CONVERSATION ABOUT
MAKING THE MOST OF SHREWSBURY WINTERS:

TIPS, STORIES, PROBLEMS & SOLUTIONS
WELCOME!

Space is limited, please e-mail
joanaleshire@vermontel.net to save a seat!



PLEASE COME TO A COMMUNITY PICNIC PARTY

**SATURDAY, SEPTEMBER 3
5 to 7 pm
at the SHREWSBURY MEETINGHOUSE**

MUSIC BY HOME-GROWN MUSICIANS

BRING A PICNIC, BLANKET or CHAIR

FREE, THANKS TO SAGE: 802 ICE CREAM POPS

OUTDOORS ONLY: NO RAIN DATE

e-mail joanaleshire@vermontel.net with questions

Sponsored by SAGE and Friends

SHREWSBURY MEETINGHOUSE OUTDOOR CONCERT SERIES

Please bring a \$ contribution of any amount to support the musicians and the historic Shrewsbury Meeting House.

For info, email: singtolive57@gmail.com



RICK REDINGTON AND THE LUV

Friday, August 26 @ 5pm

(raindate August 28 @ 5pm)

One of Vermont's best kept secrets, Rick, Heather and Blake return to Shrewsbury. They have been "Spreadin' The Luv" all over Vermont and the region for many years and audiences feel it! Stevens Farmstand pairs with Spring Lake Ranch and the Vermont Farmer's Food Center to bring us delicious dishes to benefit the VFFC.



WILL PATTON ENSEMBLE

Friday, September 2 @ 5pm

Will Patton, David Gusakov, Clyde Stats and Dono Schabner have been playing their spirited stew of world music around the Northeast for over twenty years. Drawing from Gypsy jazz and Brazilian choro styles among others, they'll create an audience experience like no other. World music, from Paris to Rio...and back to the front porch. Marble Valley Kitchen returns again with their yummy concoctions!



THE PLUMB BOBS

Saturday, September 10 @ 5pm

(raindate Sunday, Sept. 11 @ 5pm)

With Shrewsbury's own, Marcos Levy and Aaron Schneider, and honorary Shrewsberries Mary Barron and Jonathan Czar, the Plumb Bobs are back to close out our third season. Four talented musician friends have created a folk/rock/eclectic sound that is all their own. Their love for music and each other is infectious. Gamebird of Ludlow returns with tasty offerings.

Stewart MAPLE'S TAP TO TABLE

AN AUTUMN MARKET

SUNDAY OCT. 2 2022

10 AM - 4 PM

FEATURING:



WITH SPECIAL MUSICAL GUESTS:

BILL BRINK & CIARRA FRAGALE



SPECIALTY
FOODS

HANDCRAFTED VERMONT
PRODUCTS

LOCAL
ENTERTAINMENT

FOOD
TRUCKS

FALL
FUN

CRAFT
BEER

Stewart MAPLE MARKETPLACE
5444 VT ROUTE 103, CUTTINGSVILLE, VT

SHREWSBURY LIBRARY

Library News Submitted by Joan Aleshire

LIBRARY & FOOD SHELF HOURS

Monday 10am-12pm

Tuesday 7pm-9pm

Wednesday 10am-5pm and 7pm-9pm

Thursday 7pm-9pm

Friday 10am-12pm

Saturday 10am-12pm

*** MASKS: Please keep them on until further notice. Many thanks for your continuing patience and cooperation!

*** We're very pleased to announce that CABOT SPATZ will be our new Student Trustee! Cabot will work with Trustee ELIJAH LACHANCE on building our Young Adults' collections and programming. Welcome, Cabot!

*** We still have an OPENING on our 13-member Board of Trustees. If you love books and libraries, and would enjoy working with neighbors in a small community organization, the Library Board may be the place for you! We ask that you attend Board meetings on the second Tuesday of every month; staff during Library hours (above), and serve on one of our committees (Children's, Fund-Raising; Adults' Programming, or Building). Please contact a member of the Nominating Committee: Gail Hartigan (scgthartigan@vermontel.net); Trish Norton (knsh@vermontel.net), or Lisa Sharrow (cutsvil@vermontel.net) if you are interested. We would welcome your help!

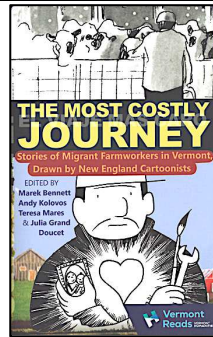
*** MANY THANKS to SANDY BRAGG for his essential help in bringing "The Vast Library of the Female Mind: The Poetry and Life of Ruth Stone" with filmmaker Nora Jacobson to the library last month! Sandy's attention to detail—from contacting Nora and scheduling, to publicity and projection—made this an outstanding library offering with an appreciative, full-capacity audience.

Coming Events:

Saturday, August 27: ANNUAL STREET DANCE with MARCOS LEVY and THE COMMUNITY BLUES BAND @ THE MEETING HOUSE. HOT DOG DINNER @ 5:30pm; DANCE @ 6:30pm. See you there!

Saturday, September 24 @ 9am: ANNUAL BOOK SALE opens and continues on the honor system for 2 weeks. We welcome donations of books and videos in good condition only, AFTER SEPTEMBER 1. NO encyclopedias, magazines, or textbooks, please - and NO moldy or damaged books, please! Take those to the Transfer Station!

Friday, September 30 @ 7pm: "MAKING THE MOST OF SHREWSBURY WINTERS": Newcomers, Old-Timers, and Everyone in between: please share your stories, tips, and questions! See our ad in this issue of The Times.



Continuing Programs:

Sunday, September 18 @ 4 pm: FAMOUS BOOKS BOOK CLUB: Next book: The VT Humanities VT Reads 2022 selection: The Most Costly Journey: Stories of Migrant Farmworkers in Vermont, Drawn by New England Cartoonists: A Graphic Novel. Books are available at the library, thanks to VTH and Chryl Martin, for writing the grant!

Sunday, September 25 @ 7pm via Zoom: SCIENCE BOOK CLUB: Packing for Mars by Mary Roach. Print and e-books available. Please let Margery know your preference: salmonm@vermontel.net.

New Books include:

- *Life on the Mississippi*: An Epic American Adventure by Rinker Buck: The story of reconstructing a river boat, as well as a history of our longest river, by the author of The Oregon Trail.
- *Fellowship Point* by Alice Elliott Dark: A compelling novel of two lifelong friends in conflict over land conservation and private ownership.
- *Boondocks: Because I Know You Don't Read the Newspapers*: A hilarious, spot-on graphic novel by Aaron McGruder.
- *The Kingdoms of Savannah* by George Dawes Green: A haunting thriller: a portrait of a place and an indomitable woman.
- *Forest Walking* by one of our favorite foresters, Peter Wohlleben.
- *The Church of Baseball: The Making of "Bull Durham"*: Home Runs, Bad Calls, Crazy Fights, and a Hit Movie by Ron Shelton.

And remembering a wonderful friend, writer Yvonne Daley, we have her books: *Going Up the Country*; *A Mighty Storm: Stories of Resilience after Irene*; *An Independent Man: Adventures of a Public Servant (with Jim Jeffords)*; *Octavia Boulevard (a novel)*; *Vermont Writers: A State of Mind*; *The Bend in the Road: The Story of Lenny Burke's Farm*; and *Prisoner of Hope (poems)*.



The Library Children's Committee

Please save the dates for the following children's programs...

Read to Faith the Dog Oct. 16 @ 2-3:30

Halloween Party Oct. 28 @ 5:30-7

Holiday Movie Night Dec. 9 (time TBA)

Additionally, we will need volunteers for the Halloween Party to make it successful. If you can help, please email:

Sarah Titterton at sarahjane@titterton.net or

Donna Swartz at donnaswartz44@aol.com

Patience is Rewarded

Patience is not a tree attribute but it is for those folks interested in finding big trees. Trees just continue to function as the largest plants in a community as long as there is a consistent supply of sun, soil, and water. Given those three ingredients and an environment that is free of major change over time a tree will continue to get larger through a life span which can be measured in centuries. The reward is given to those who try and find the largest tree of a given species by finally having it designated as Vermont's largest.

This summer, in association with Vermont's newly revamped Big Tree program, a measuring crew finally spent some time in Rutland County officially measuring newly nominated trees. Some were previous state records re-nominated while others had been under the radar of several big tree enthusiasts who were patiently awaiting for it to surpass the existing champion. Our new entry falls into the latter category and was identified over a decade ago as a potential big tree. The previous champion in Brattleboro had been in failing health for several years and finally lost the growth it needed to retain its title (total points for any tree are the sum of circumference in inches, height in feet, and 1/4 of the average crown spread).

What will also interest a big tree enthusiast is not only the size of the tree but the "curiosity" factor associated with it being an unusual specimen and this tree certainly is. It is a CUCUMBER TREE (*Magnolia acuminata*) and certainly one of only a few growing in Vermont. It is not a native and grows best in warmer states south of here but someone many years ago thought it an interesting specimen and planted one in the front lawn of what is now one of Rutland's older houses. It is living a quiet life on North Main Street (east side) near the Temple Street intersection and clearly visible from road or sidewalk.



It is not a street tree but a lawn tree perfectly situated for a long life located on a raised lawn several feet above North Main Street (somewhat

immune from road salt all winter long) and in a place not disturbed by other encroachments which could have shortened its life. The house, now Stofka Oral Surgery, is among several houses on that street built in the 1890's suggesting that our tree was planted around that time and has survived for a century and more. This cucumber tree with its large shiny oblong leaves, furrowed bark, large showy yellow-green flowers, (spring), and a sumac like red fruit (fall), adds a wonderful presence to this lawn. Its size also is impressive at: 37" diameter, 65' tall, and a crown spread of 60'.

While we may enjoy the curious urban trees within our communities it is very difficult to find large trees (especially those like cucumber tree) growing in the upper elevations of towns like Shrewsbury and Killington. No, we have to depend on more hardy tree explorers to scout the woods seeking the more traditional species like Sugar Maple, Yellow Birch, Red Spruce, and Balsam Fir. More often than not a big tree is "discovered" while out on another adventure and while one may remember the tree and even its location it is very difficult to take

any measurements. Here a piece of string comes in handy. It weighs next to nothing and can live in a day pack until used for taking circumference; the most points given to a tree of the three required and the most variable. Simply wrap the string around the tree, tie a knot where the two ends intersect, and when you get home measure out the circumference which gives you a quick reference when compared to the existing state record for that tree (google Vermont Big Tree List). Now you can say "oh well I tried" and/or be patient until your tree rewards you one day by moving to the top of the list. Patience can be its own reward.

~Gary Salmon, Shrewsbury Tree Warden

SNO BIRD NEWS

Our club is still working on the new signs. The last work day we pounded in 10 sign posts and some of them we really had to work at it to get them in the ground. Dave borrowed a gas



powered pounder to install the posts that made it possible. We had 5 members show up to help and one had to leave at noon so we finished up with 4. That is the minimum number you need to pound in the posts. Summer is flying by and soon we will be debrushing the trails and checking out the Tucker for maintenance issues. Our Trail relocation project on 407 was denied at this time but we will still looking into what we can do to get around the steep hill. When we were out last weekend, we could really see how dry it is out there.

We hope we get more rain soon and it continues into snow this winter. ~Submitted by Roy Arthur



BOOK REVIEWS

- **** *Fantastic
- **** *Compelling page turner
- *** *Enjoyable
- ** *Just O.K.
- * *Not recommended

Dog On It
by Spencer Quinn

My bet is that most anyone who is or has been a pet owner has wondered what's going on inside the pet's brain. And many even talk to the pet as if they can understand. Do they? Some things, for sure.

The 2009 book, *Dog On It*, by Spencer Quinn, spins a decent mystery around those ideas. In fact, the narrator of the book is Chet, the dog who lives with Bernie, the private investigator. If you like mysteries and dogs, I highly recommend this book. You'll laugh out loud and keep turning the pages to unwrap the mystery.

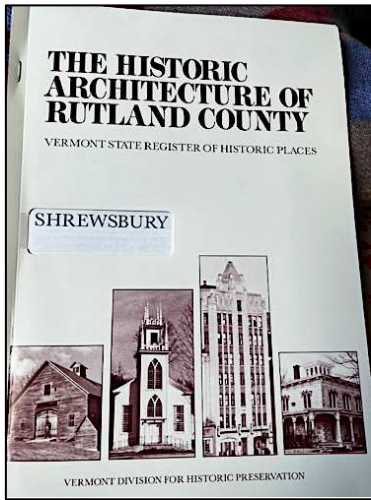
~Reviewed by Sally Deinzer

Shrewsbury Historical Society

www.shrewsburyhistoricalsociety.com

Truth be known

In a recent email from Mark Youngstrom of our town, he advised that he found some errors about his house in the 1988 publication of *The Historic Architecture of Rutland County* featuring Shrewsbury town. This smart looking booklet was delivered to our town sometime after publication and recently a box was given to the Historical Society for handing out to residents. Mark looked through it and he found some errors which I would like to bring your attention to, and if perchance you have a copy of said booklet, why not clip out this column and add it to the booklet for future reference.



Youngstrom wrote: "Our house is on the inside cover sheet and labeled as one of the oldest remaining houses in Shrewsbury. Not true by far. This was something Nancy {Spencer} was convinced of despite the evidence. She and I chatted about this and I didn't change her mind.

Our house never had a center chimney (unlike Adrienne's, Licia's, Liesbeth's or Taffy's original house). Just a hung chimney starting on the second floor, so it was a "stove house" not a fireplace house therefore mid 1800's when stoves were commonly available probably due to the railroad. Plus, our house is on the 1869 Beers Atlas but not on the 1854 map. In addition, the story goes according to Leonard Korzun, our house was built by Frank Smith as a tenant house after he acquired the farm from the Holden family around 1850.

It continued to be part of the Smith family farm until 1930 or so, just before Boniface Korzun bought the farm. In addition, this isn't called Fox Lot Hill. The Fox Lots are/were beyond the Poor Farm (now the State Wildlife Management Area).

Summer days past

Years back plans would be on track for the Historical Society's annual Croquet Contest, complete with assorted savouries to be held on the lawn of the former Shrewsbury Inn, proprietors: Don and Lois Butler.

One year the Society challenged the Historical Society of Mt. Holly and a crazy event occurred. Whilst hitting balls through the wickets, two women dressed as gypsies sauntered on the field causing a fray with alarmed participants.

Turned out the women, all made up and in costume, were Heidi Mitchell and Fran Patten, looking to make trouble! And fun!

Submitted by Ruth Winkler

Shrewsbury Library's

Dog-Gone Dinner

Choose a Mexican, California, Seattle, Coney Island, New York, Chicago, or Chili Dog

and

Street Dance

featuring

The Shrewsbury Community Blues Band

At the

Shrewsbury Meeting House/Town Hall

Sat. August 27th

5:30pm-Dinner 6:30pm-Dance

Dinner & Dance age 13 & up \$10

Children 5-12 \$5

Just the Dance \$5

Bring your dancing shoes and chair
Dinner and Dance outside



THE NEW LEARNING PROJECT

CHOOSING TO EXPERIENCE OUR POTENTIAL

MUSIC LESSONS -- Guitar, Piano, and more
RED CROSS COURSES -- First Aid, CPR, Lifeguarding
SWIMMING INSTRUCTION
(More services at website)

STUDIO IN CUTTINGSVILLE VT
www.TheNewLearningProject.com
TheNewLearningProject@gmail.com
802.492.3208

Marcos Levy
Instructor with over 30 years
of Experience

YOUR TICKET TO BETTER HEALTH

Sparkling Imaginations for Over 22 Years!

Thrive Center
OF THE GREEN MOUNTAINS

Chiropractic Care, Applied Kinesiology,
Therapeutic Massage/Bodywork,
Holistic Health Education, Nutritional
Supplements, Coaching, Worksite Wellness



Joseph P. Donohue, DC



Lisa Marie Donohue, MA, LMT

Serving the Community with Excellence and Compassion Since 2000

68 South Main Street Wallingford, VT • 802.446.2499
uthrive@vermontel.net • thriveinvermont.com

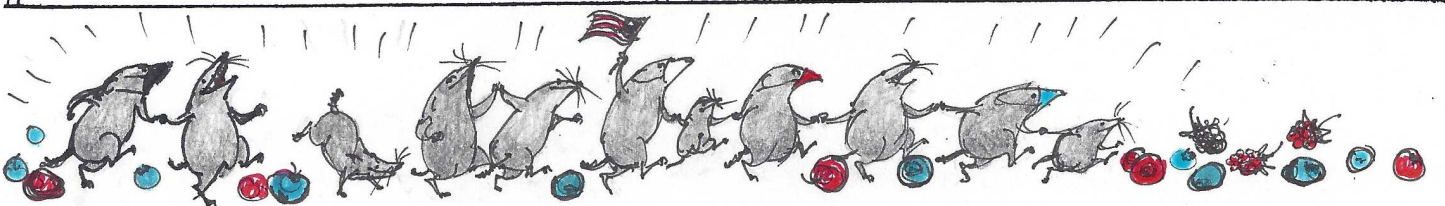
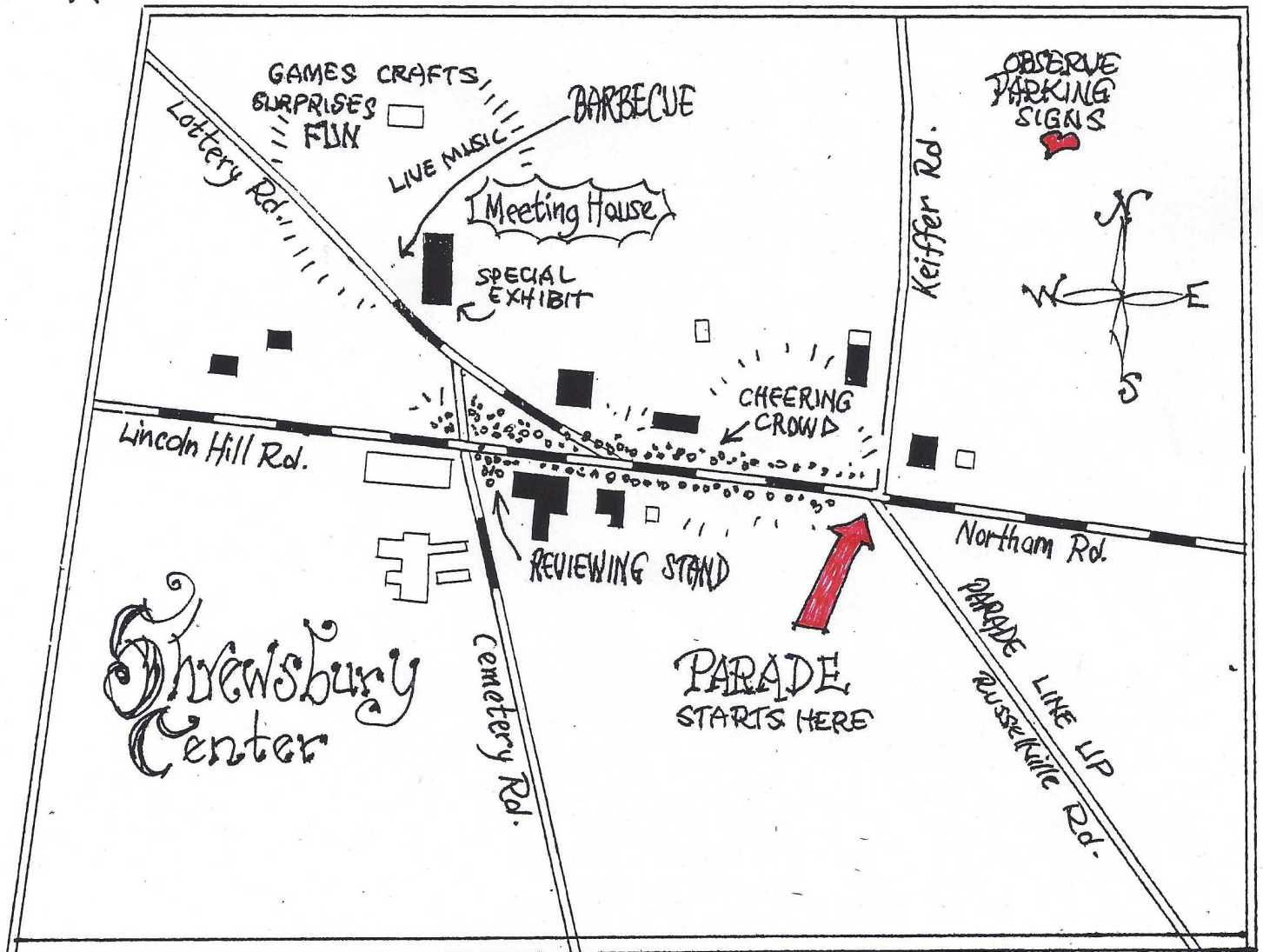
SHREWSBURY DAY

☆ 2022 ☆

SEPT. 17th [RAIN DATE: SEPT 18]

PARADE 11:00 AM

♥ BARBECUE ♥ LIVE LOCAL BAND
☆ GAMES ♥ CRAFTS ♥ SURPRISES ☆



SHREWSBURY DAY

Saturday-September 17, 2022 @ 11am

Celebrating People No Dogs / No Pets

The Shrewsbury Day Committee is busily meeting to ready ourselves for Shrewsbury Day 2022. Many things have changed since we cancelled last year's celebration. We now have many mitigation practices as well as vaccines, medication and masking. Shrewsbury Day is an outdoor event and we feel confident that with everybody's cooperation we will have a wonderful day. There will be no judgement in the way one chooses to attend Shrewsbury Day, masked or unmasked. We respect people's comfort levels. The meeting house will be closed to the public.

Schedule of Events

9:30-11am: DJ Brett Myhre Come early and enjoy DJ Brett in front of Maple Crest Farm
11am: Parade at 11 from Russellville Rd to the Meeting House
12 noon Kids Events
12 Noon Entertainment by The Screen Porch Revival Band
12:30 pm Barbeque

Animals: No Dogs ~ No Pets

We ask that you do not bring any live animals to our Shrewsbury Day event, leashed or loose.

Parking:

Do not block resident driveways or obstruct vision of oncoming traffic.

Abide by parking signs and on one side of the road only for personal Safety and emergency

Shrewsbury Day Parade

Shrewsbury Day is September 17 at 11am with the Parade as our opening event.

DJ Entertainment Before Parade

DJ Brett Myhre will be set up by Maple Crest Farm and will entertain early arrivals.

Barbecue

~~Lunch is by Donation~~

Down on your luck get in line.

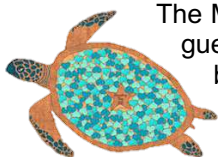
Everyone eats on Shrewsbury Day!

Following the Parade we will host a barbecue with salad greens, veggies, baked beans, burgers and dogs. For dessert we will have several flavors from Stewart's Ice Cream Shop and Stewart Maple's popcorn for some crunch. If the money is tight that week, you will eat anyway. This event is for everyone to enjoy.

History begins here!

Sign the

SHREWSBURY DAY MAGIC TURTLE GUESTBOOK



The Magic Garden Turtle is a kind of "alternative" guest book. Instead of signing a traditional book, you sign one of the small, wooden hearts that comes with the turtle. You write your name or initials on a heart and then put the heart, name side up, into the slot on top of the turtle's back. The turtle will fill up with the names of everyone who attends Shrewsbury Day 2022 and wishes to take part.

Games and Activities

We are picking up where we left off and we will have lots of free offerings of games and activities for the kids. We have razzle dazzle nails, hair color sticks, tattoos and a crafts table area with beading and chalking. There will be a variety of games including everyone's favorite pizza box shuffle. We will have corn hole, giant ring toss, jenga and the famous pummel pipes.

Tee Shirts

We are selling our Covid Memorial 2021 Tee shirts. We got cut short last year and we are returning with a new twist of a free Iron on Memorial Patch. Shrewsbury Day Tees: Kids tees \$10 Adult Tees \$15 Adult Long Sleeve \$ 20.

Band Entertainment

The Screen Porch Revival Band (Ray DiPrinzio's band) will be entertaining at noon. Bring a chair or blanket if you need seating or just gather as you wish.



50/50 Raffle

Buy a ticket and win big!

Red, White or Blue

~~Wear It or Wave It~~

Shrewsburies Unite.. Our event theme is Red, White and Blue--Wear or Wave! Please join us in making Shrewsbury Day a sea of color and unity.

Rain Date

Rain date will be Sunday September 18th. We are excited to be adding to the event this year and to be providing you with some Shrewsbury Style Loving.

Submitted by Grace Brigham and Betsy Jesser

[Committee Members: Grace Brigham, Catherine Carrara, Tracy Crelin, Linda Fontana, Stacey Harshman, Betsy Jesser, Hallie and Bob Knudsen, Chryl Martin, Lavinia Seide, Liesbeth van der Heijden, Ann Vanneman, Penelope Weiss, Brian Winkler, Sharon Winnicki and the Shrewsbury Fire Fighters.]



Thanks to Betsy and Grace

Betsy keeps track of past and current Shrewsbury Day events in her growing binder, and Grace is taking a rest after organizing sign painting but continues to doodle her next creation! ~C. Martin

Handcrafted. Local. Pure.

**MAPLE SYRUP, CRAFT BEER,
SPECIALTY FOODS, ARTISAN GIFTS**

**Thursday-Saturday 11-5
Sunday 11-4**

www.stewartmaple.com

**5444 VT Route 103
Cuttingsville, VT 05738**

August 31st Fundraiser for Rainbow Riding Center:

Reinbow Riding Center is excited to announce that we have received our largest donation to date--\$25,200--from Assisting Children Today, co-founded by Troy Caruso owner of Fox Run Golf Club in Ludlow. The donation will be presented at our fundraising event at Fox Run Golf Club on August 31, from 6-9 p.m. Music will be provided by Krishna Guthrie, Food by Celebrity Chef Andrew Mollen (featuring Raw bar and Hors d'oeuvres), wine and Mt. Holly Beer will be provided. We invite you to attend, as we'd love to have your support in sharing the benefits of therapeutic horsemanship within our community, as well as to raise needed support for our mission. For tickets, RSVP and pay at the door call 413-652-5440 or go online to reinbowridingcenter.org/donation. Please see our flyer for full event details.

We have launched a digital fundraising campaign in which we aim to raise another \$25,200. Donations can be made via our Facebook, our website, Venmo @reinbowriding, and at https://fnd.us/reinbowriding?ref=sh_0BYFz8 or using the QR code shown here.



We are hosting this event to spread awareness about Reinbow Riding Center, a 501(c)(3) in Belmont, VT and a member of the Professional Association of Therapeutic Horsemanship (PATH) International. Since 2008 we have been dedicated to improving the well-being of individuals with special needs through a therapeutic equine experience. We are passionate professionals working together with self-sacrificing volunteers. Reinbow Riding Center, formerly of Shrewsbury, has run on a tight budget and grassroots fundraising efforts for the last 14 years allowing us to support members of our local community. We offer lessons to those in need regardless of their ability to pay. We thank those of you who have shown your support over the years and invite anyone new to find out more! We hope you will choose to support our efforts and look forward to seeing you on the 31st!

Visit us on the web at reinbowridingcenter.org; follow us on Facebook, Twitter @ReinbowRiding and Instagram @reinbow_riding_center.

~Submitted by Janet Upton

The Shrewsbury Community Church



Compiled by Sue Ransom-Kelley

In September All Sunday Services will return to the Center Church on the second floor of the Meeting House! All are welcome to visit the Shrewsbury Community Church any Sunday at 10:30am for services. We listen to an uplifting message, hear beautiful music, meditate, and visit with our neighbors in the beautiful sanctuary.

Big things are happening! The Sunday Fun Day Program will **return on Sunday Sept 11, 10:30am** in the children's room upstairs at the Center Church. All young people ages 4 through grade school are welcome to join us for stories, snacks, crafts, and play! Call Lynette with any questions 802-775-0853 or 802-683-0631.

Community Needs

- Wedding, Funeral or Memorial Service Requests: Contact Donna Smith 802-492-3367 or Sue Kelley 802-492-3738, 802-779-4825
- Community Helping Hand Requests: Contact Donna Smith 802-492-3367 or Sue Kelley 802-661-8399, 802-492-3738 or Karen Lorentz 802-558-5991. Shrewsbury residents experiencing financial hardship. Assistance can be given for basic needs such as food, heating, gasoline, etc. If you or a neighbor are in need please let us know!
- Pastoral Care, Home, Hospital Visitation, Outreach Requests: Contact Roxanne Ramah 802-492-3675 or Ruth Kinne 802- 775-5318.

Community Church Calendar

•Sunday, August 28@ 6:00pm – Vespers Service led by Wendy Savery (no morning worship service) @the Northam Church.

•Sunday, September 4 @10:30qm Return to Center Church- Worship Service and Holy Communion led by Wendy Savery.

Sunday Sept 11, 10:30am – Worship Service led by Steve Longley. Fun Day Program for the kids.

Sunday, Sept 18, 10:30am – Worship Service led by Wendy Savery. Fun Day Program for the kids.

Sunday, Sept 25, 10:30am – Worship Service led by Wendy Savery. Fun Day Program for the kids.

Sunday, Oct 2, 10:30am –Worship Service and Holy Communion led by Wendy Savery. Fun Day Program for the kids.

Sunday, Oct 9, 10:30am – Worship Service led by John Hill. Fun Day Program for the kids.

Shrewsbury Library

Book Sale



Saturday September 24

9 am

Ongoing under the Tent For a couple weeks

FOR SALE

STIHL KM111-R-Z KombiMotor drive unit (two years old and recently tuned): connects to a variety of Kombi tools (not included) such as string trimmer, edger, power sweep, pole saw, etc. An extremely versatile piece of equipment: **\$75.**

STHIL FS110-Z brush cutter with bicycle handle and string trimmer attachment, lightly used: **\$50**

Contact Rich Biziak (802-492-2255)
for more information

Bone Builders

10am – 11am

Every Tuesday and Thursday
at the Meeting House on Lottery Road
Free weights and Instruction

Join us to improve your
Bones, Balance, and Strength



Birds on the Move...at Night!

In talking recently with our friends Paddy and Alice Martin, Paul and I recalled the night a couple of years ago when we sat by the Mill River behind their house in Shrewsbury at dusk and had to stop counting migrating Common Nighthawks in the hundreds because it was getting too dark to see. We marveled at their zig and zag flight between bursts of flaps and maneuvers to snatch insects. They were following the river, and we wondered when we might see them again in another year. It was an amazing phenomena to witness.

We are all acquainted with seeing chevrons of geese flying south in the daytime, but of the more than 650 species of North American breeding birds, more than half are migratory, and many, many species fly at night. Birds generally start flying on their migration route just around dusk and then on through the night, roosting to rest between 3-6am.



Of the many online workshops and programs that I "attended" during the pandemic, finding out about Bird Cast was probably, for me, one of the most interesting ones. Bird Cast will help you answer the questions: When, where, and how far will birds migrate? How many birds passed over my area last night? How many are expected tonight? At what

altitudes do they fly? Which species are likely on the move right now? It's real time analysis of migration "traffic", as detected by U.S. weather surveillance radar.

To answer my question about the Nighthawks, I consulted the Bird Cast app and their migration time is right now....end of August/ early September. According to EBird (a Cornell Univ. Ornithology lab project), they have one of the longest migration routes of all birds, traveling between Canada and their wintering grounds in southern South America. Since they primarily eat insects, they need to head south in search of more food.

You might enjoy exploring with Bird Cast yourself: <https://dashboard.birdcast.info/> You can put in a state, county, etc. anywhere in the contiguous U.S. I use the location of Rutland County, VT. As I write this on August 18, over 25, 000 birds flew over our area last night, including many species of warblers and wrens, and this number will be greatly on the rise by the time you read this.

What is going on up there in the sky while you sleep?

Article by Vicky Arthur

Photo from Macauley Library/ Cornell Ornithology Lab

Septic System Design

by

Aaron C. Haupt, Class A Designer

(formerly Krueger Engineering, Inc.)

Shrewsbury, VT

802-492-3653

aaron.haupt@icloud.com

Aethereal Place

Destiny delivers a Symphony of Twilight Singers this evening. Natures Song immersed in the Aethereal and Temperate maturing forest. These hardy Hermit Thrushes and Swainson's Thrushes echo their Joy and Fruitfulness with an ever expanding Repertoire and Dialect. The females likely choose their favorite singers to Serenade while they raise the next Progeny. They fly before Dawn and after Dusk to Groom the forest. A Symbiotic relationship that provides Balance and Grace. No bird feeders for these Experts. Strictly Organic and Pesticide, Herbicide Free! They even minimize those Pesky leaf cutter worms.

Morning provides another 4:30am Performance. It's Lovely to Awaken and Splendid to Linger with their Song. It's a Variable flute-like sound often trailing with various Trills and Quips. Like Floating on/in Arias. It's hard to feel Alone, with an Intelligence and Simplicity that's Separate and perhaps Superior top our own.

So Enjoy this Heaven and Learn. If only—If only, You will keep your senses Highly Attuned and Engaged with the Forest!

~by Jerry Gardner

One Lucky Bird!

Recently I heard some cries in my car garage and found a humming bird on the rafters...easy for me to catch him by using a long handle paint roller. I raised it to the spot where he was perched and got him to cling onto it.

Once down, I placed him on some cardboard. All the while he was still crying so I brought him onto my deck and placed him near where the humming birds eat, fly about, and talk. I had just made a fresh batch of sugar syrup for them, so I placed some in a cup and got a clear pink straw and went back outside to the bird. He was still crying, with feathers all fluffy, dozing, and half asleep. I filled the straw with some syrup by sipping some up and carefully placed it so his bill went inside. He began tasting the sap with his wee forked tongue and then removed it. The next taste was with a more wide opened bill and longer tastes. This went on for a good 20 minutes.

Once the sap restored his energy, he tested his flight gear (*wings to most people*)...had some more to eat... preened his wings...and had more to eat. One more test of the flight gear, still listening and seeing his pals...then took off. Now back in the usual feeding patterns and dog fights of seven not six.

Man down but recovered and restored! Ah, no pictures...it was too much of a delicate situation with something so wee and tiny! Of course it was thrilling to me that I saved a hummie instead of finding it on the garage floor not alive!

~Article by Lavinia Seide

Come enjoy the Harvest Moon together!!!

Take a short walk, share poems and songs,
view the new moon through a telescope,
and then enjoy dessert on the porch!

The SCC invites you to join the fun on
Friday, September 9

Where? **1785 Russellville Road**

When? **5:30 – 7:30 pm**

Why? To enjoy the Harvest Moon and evening together!
What to bring? Binoculars and a flashlight if you have
them, a chair, a poem, a song or a story to share if you'd
like, and an appetite!

Please RSVP so we know how many pies to bake!
802-492-3327 or shrewsburyvtconservation@gmail.com

Rain date - Sunday September 11



Death comes to us all
We rarely get a warning
Fly 'til it arrives

Haiku and Photo by John O'Dowd



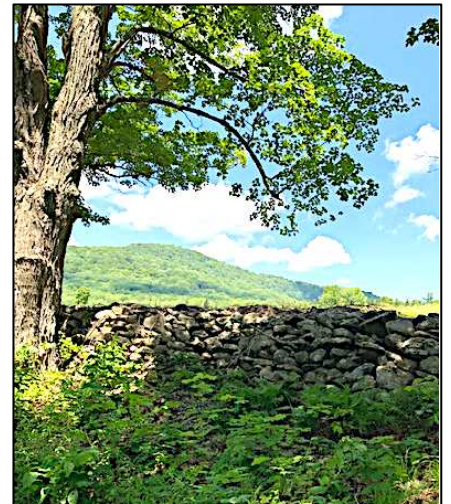
**SHREWSBURY DAY
TEE SHIRT**

\$10 Kids

\$15 Adults

\$20 Long Sleeves

For sale at the event



Ubiquitous walls
No current need or purpose
Shares secrets with trees

Haiku and Photo by John O'Dowd



Shrewsbury Conservation Commission Trail Camera Picture of the month

This month we have trail camera captures from Diane Jakobsen of a Great Blue Heron wading in the Cold River and a large bear. Linda Shelvey was very lucky to have a cute cub sit in front of her camera on a soft, mossy spot. Look at the claws on the cub's feet!

Do you have a wildlife picture to share? A track for us to identify? Send your trail cam, phone or camera picture to Linda Shelvey, Lpurdyshe1@gmail.com Please include your location in your email, so we can include your data on our Wildlife Map .



Shrewsbury Conservation Commission's Youth Member

Davis Rudisill is a Shrewsbury Conservation Commission Youth Member. He's worked very hard throughout the summer pulling invasive garlic mustard and poison parsnip. When driving out of town with his mother lately, he commented, "I can tell we're not driving in Shrewsbury anymore because there's poison parsnip everywhere." I've heard he's looking forward to working on purple loose-strife next!



Davis has been helping me set up and do weekly checks of SCC's trail cameras. We locate the cameras hoping for wildlife sightings to add to our map of potential wildlife corridors in town. On our last camera check we approached the cameras from a different direction. Davis knew

exactly where we were and did the whole process by himself. This involved unlocking the cameras, removing the camera from its metal lock box, checking batteries, swapping SD cards and re-locking and re-aiming the camera. Well done Davis! I've really enjoyed getting to know and becoming friends with Davis! I couldn't have a better assistant!

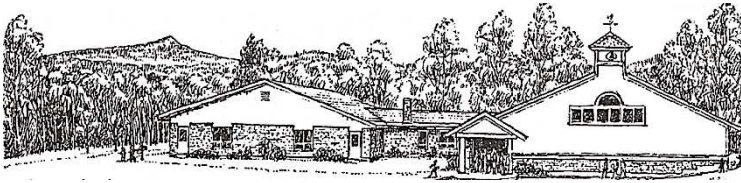
Photo by Michelle Greene; Article by Linda Shelvey



- ◆ Handmade and Local Goods ◆ Artisanal Foods
- ◆ Gardening and Home Decor ◆ Antiques, Toys, and More!

Hours: 11am-7pm
5304 VT Route 103, Cuttingsville
www.facebook.com/WallysCorner

(516) 522-4174
hello@wallysvt.com



SHREWSBURY MOUNTAIN SCHOOL

Hello SMS Families and Community,
Happy September and welcome to this school year!

Important Dates:

Aug 29: Back to School Meet and Greet with our Teachers and PTO 9-10am

Aug 31: First day of School! After School Program Begins

Sept 5: Labor Day – No School

Sept 8: "Coffee with Kristin" – SMS 8-8:30am – all parents, school board and community members welcome!

Coming in September! – Back to School Night! Students and families visit their classroom, chat with their teachers and view student work.

Updates and information:

*Back to School Meet and Greet 8/29 at 9am: Our SMS homeroom teachers would like to welcome their students to their classroom and make a personal connection before the school year begins. The school doors will open at 8:50am. We will all meet in the gym for some announcements from Kristin and PTO. Afterward, our families can visit their classrooms. We will end at 10am so that our teachers can get back to their preparations for the first day of school. Please do not attend if you or anyone in your family is showing any sign of illness or have been in close contact with someone with Covid-19.

*First Day Share! One of our favorite parts of the first day of school is seeing the big smiles, favorite outfits and summer growth of each kiddo as they walk into our school. In order to share that joy this year, I am asking any of you who would like to take a first day of school picture of your child(ren) and email it to me by Friday 9/2. I will put together a slideshow for our email list and Facebook page so we can all celebrate together.

*Coffee with Kristin 9/8: Thursday, September 8 at 8am I will engage parents, board members and community members in conversation about our school. All are welcome and I am looking for feedback and suggestions about how we can make the best possible learning environment for our students to thrive! My goals are to increase connections between our school and our community and move forward with our sustainability mission. In the future, I will also have an opportunity to engage with me in the evening as well.

*After School Program - we are actively seeking a new director for our Afterschool Program. Please have any interested applicants contact me!

I hope that you enjoy the remaining days of summer and I look forward to seeing everyone soon! If you have any questions or concerns, please contact me at 802-786-3995 or at [kcimonetti@millriversschools.org](mailto:kcionetti@millriversschools.org).

~Sincerely, Kristin Cimonetti



PVF Services LLC

Excavation, Trucking, driveway repair, site prep, building removal, brush grinding and much more!

Neal and Chad

1368 Lincoln Hill

Cell 802 236 8105

Shrewsbury Vt, 05738

Office 802 492 3364

sharrowmaple@gmail.com



Maple Crest Farm Bed & Breakfast

"Your home away from home."

Bill & Donna Smith, Innkeepers
2512 Lincoln Hill Rd. Shrewsbury, VT 05738
802.492.3367
Email: maplecrestbnb@gmail.com

NATURE'S TURN, LLC

Gerry Martin

Artistic & Functional Wooden Bowls



Vermont Crafts Council

Open Studio Weekend

Saturday & Sunday

OCTOBER 1 & 2, 2022

10am - 5pm

998 Lincoln Hill Road,
Shrewsbury, VT 05738
(802) 492-2244

Field Trips at Jockey Hill Farm

We will be hosting two field trips at Jockey Hill Farm, 630 Coldham Road, Shrewsbury, in early September and October. The first will be held on **Thursday, September 8 at 5:30pm** for approximately an hour and a half and will focus on the several new land management practices we're pursuing at the farm and whatever you're interested in. These practices include but are not limited to forest thinning (just completed) for the purpose of forest carbon, planting of climate resilient trees including oaks and American chestnuts, and revegetation in patch cuts that have been decimated by excessive herbivory. All these efforts are intended to adapt to the impact of climate change. We will also talk about the forest carbon program just rolled out by The Nature Conservancy and the American Forestry Foundation called the Family Forest Carbon Program in which we participated in 2021 and will do so again in 2022. Finally, we've also hired an invasives plant expert to help us develop a plan to identify, control and monitor invasives in the coming years. We'll touch briefly on this. The above can easily be adjusted to your interests. All ages are most welcome.

Then on either **Saturday, October 1 or Saturday, October 8**, we'll be hosting a Vermont Coverts social event for Covert cooperators in Shrewsbury and neighboring towns. Lisa Sausville, Executive Director of Vermont Coverts, and I are working on nailing down the final date. More to come shortly on this. If you're not familiar with Coverts, it's a wonderful membership organization that focuses on habitat for wildlife. Coverts website is at www.vtcoverts.org.

Hope to see you at one or both these events. As always, if you are interested in a guided walk at the farm, please let me know at 617-899-1011 or stoutim@gmail.com. Maps are available at the bridge over to our house. We love visitors.

Submitted by Tim Stout, Jockey Hill Farm



Cubs on the Loose

Recently one night I heard rattling and went to the garage to see what it was. One of bears was standing outside the side door with its paws on the window, looking into the garage for treats. Scared the daylight out of me!!! Two adolescents, raising a ruckus!! The composting bin attracted them, but the garbage can paid the price! ~Pam Monder



KAYAK FOR SALE

Wilderness systems tsunami 125 kayak, orange, \$950. Original price \$1350. Used about 8-10 times over two years. Excellent condition.

Nancy or Fred 802-492-6190 or nellery@vermontel.net



2450 Lincoln Hill Rd
Shrewsbury, VT 05738

**Time to stockup
your freezer?**

**Don't forget our
Grassfed
Grassfinished**

- * Stew Beef
- * Ground Beef
- * Roasts
- * Steaks
- * & so much more

SmithMapleCrestFarm.com
(802) 492-2151



We welcome tennis players to use and enjoy our tennis court this summer. The court is just west of the home at 7983 Cold River Road. Extra racquets and balls are in the red shed adjacent to the court. Come anytime—no need to call!!! ~Taffy Maynard 773-2087





105 CHURCH STREET BELMONT VILLAGE

Offered at \$475,000

10 MINUTES TO OKEMO MOUNTAIN RESORT

4 BEDROOMS | 2 BATHROOMS | 2,304 SQ FT | .31 ACRES

Fully Renovated • 3 Levels • 2 Family Rooms

Mudroom • VAST snomobile network access



GAIL BEARDMORE
OWNER | BROKER

126 MAIN ST, SUITE 1A, LUDLOW, VT
+1 (802) 975-0338
OKEMO@EVREALESTATE.COM

©2022 Engel & Völkers. All rights reserved. Each brokerage independently owned and operated. Engel & Völkers and its independent license partners are Equal Opportunity Employers and fully support the principles of the Fair Housing Act.



ENGEL & VÖLKERS
Okemo



SAGE
SHREWSBURY AGRICULTURAL EDUCATION
+ ARTS FOUNDATION

Our **Shrewsbury Mountain School Garden work party** to fill the garden beds and mulch between them is at hand! We are looking for help on

September 4, 9am-12pm and September 7, 3-5:30pm.

Learn more about what SAGE and SMS are planning for sustainability education in Shrewsbury! If you are interested in pitching in on this part of the school garden project please contact Stephen Abatiell at educate.sage@gmail.com, and follow updates on our Facebook page! We would love to get a big community lift for this project over time. Please bring work gloves, shovels, wheelbarrows, (if you have them) and water!

Soon after our garden work party will be our Orchard planting with ReTreeUS! The folks from ReTreeUS will come over from Maine with tools and trees, and we'll spend the day getting our



Scott and Oana mulch fruit tree sites in the SMS school yard.

hands dirty with students, getting the trees in the ground and protected.

For more information about SAGE: contact Stephen Abatiell at

educate.sage@gmail.com, Joan Aleshire at 492-3550 or visit www.sagevt.wordpress.com. Follow us on Facebook for up to date event details at Shrewsbury SAGE.

*Submitted by Stephen Abatiell
Shrewsbury Agricultural Education and Arts Foundation*

RIVERWOOD LAWN CARE, LLC

Fully Insured

Patrick Angstadt

802.770.0433

riverwoodlawncare@gmail.com

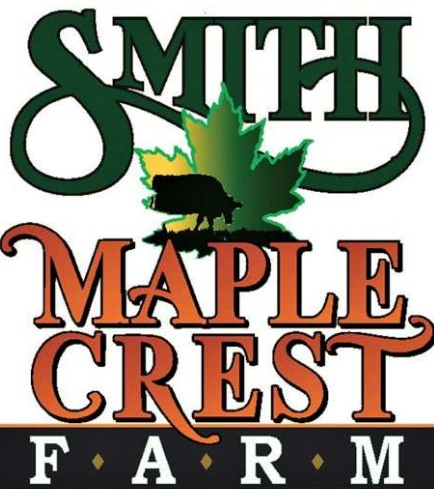
Mowing, Trimming

Spring and Fall Cleanups

FREE ESTIMATES

Times of Shrewsbury Online in Color

<http://www.shrewsburyhistoricalsociety.com>



**2450 LINCOLN HILL
SHREWSBURY, VT 05738**

GRASS FED / GRASS FINISHED BEEF

- KNOW WHO RAISED YOUR MEAT, COME TO THE FARM FOR YOUR**
- | | | |
|-------------------|---------------------|----------------|
| * GRILL STEAKS | * GROUND BEEF | * KABOB MEAT |
| * RIB STEAKS | * SAUSAGE | * BRISKET |
| * SEASONINGS | * TALLOW | * MEAT BOXES |
| * ROASTS | * BACK & SHORT RIBS | * MARROW BONES |
| * PREMADE PATTIES | | |

OUR OWN VT MAPLE SYRUP ALL GRADES AVAILABLE

A Great gift no matter what time of year !

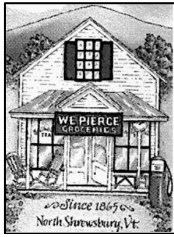
- | | | |
|----------------|----------------------|-------------------|
| * GALLONS | * MAPLE CREAM | * MAPLE DRESSINGS |
| * HALF-GALLONS | * MAPLE CREAM CHEESE | * MARINADES |
| * PINTS | * COOKIES | * MAPLE SUGAR |
| * HALF-PINTS | | * MAPLE CANDIES |

**WINTER STORE
HOURS:**

**SAT, SUN, MON 10 AM - 5 PM
TUESDAY BY APPOINTMENT
WED, THURS & FRI 10 AM - 6 PM**

SHOP IN PERSON, CALL US, EMAIL OR ORDER ON-LINE TO BE READY FOR A QUICK PICKUP AT OUR FARM STORE. CURBSIDE AVAILABLE JUST ASK.

SMITHMAPLECRESTFARM.COM TELEPHONE: 802 - 492 - 2151



NEWS FROM PIERCE'S STORE 802-492-3326

Bob Knudsen, Manager

Labor Day weekend is here, which means back to school and the beginning of Fall is almost here!

SEPTEMBER EVENTS

September is a busy month for Shrewsbury, and Pierce's is no exception. We are looking forward to not only continuing to support the concert series with 802 Bars a couple more times, but we are also excited to join in the Shrewsbury Day festivities! The wine tastings are also returning courtesy of Sandy Bragg and his wonderful palate.

PRICE RELIEF

Finally some good news about prices! We have a sale on Vermont Fresh Pasta right now, with some items going for a few dollars less than it was the last time around! We have also managed to get some pretty good pricing on candy and a handful of other goods in the store, so if you have been feeling squeezed lately, come check out what we have. We have also expanded our Bargain section to include a lot of items that are near or past their sell date but are still good to eat, as well as a few things that we are clearing out to make room for new and better options.

EVEN MORE GOOD NEWS

Vermont Bliss is here to stay! We are happy to announce that Michelle and Emma are going to continue to provide everybody's favorite sandwiches, wraps, salads, and breakfast burritos twice a week! As they continue to transition to their new space in Ludlow, the menu will continue to include all of your favorites, with a few specials from time to time as available. In addition, we now receive fresh baked goods five days a week from various sources, including our own Rob on Monday mornings, Button Hill on Tuesdays and Saturdays, The Bakery on Wednesdays, and Jones Donuts on Sundays.

THE END OF SUMMER

As Autumn approaches, we are moving a few things around in the store to help keep seasonal items and foods featured. You may have already noticed the meat and frozen foods switching places to allow for more options from our friends at Smith Maple Crest Farm and Kelley Beef, plus more of your favorites from Robie, McKenzie, Misty Knoll, and more! We are also expanding our Consignment display to help feature local artists more prominently to support our friends and neighbors in town. If you haven't seen some of the latest hand crafted local goods, now is your chance to come check them out!

HELP WANTED

We are still looking for help in the store, either from volunteers or paid part-timers, to help run the register and keep the store running smoothly. Most of the job entails just standing around and chatting with your fellow Shrewsberries and visitors to the area, with occasional bouts of taking their money and giving them food. Overall, a pretty decent gig. It's a perfect weekend job for students, retirees, or just for some extra scratch on the side to help cover your gas bill. For more information, please stop by or email pierces.store@gmail.com.

As always, thanks for supporting local co-ops and businesses and we hope to see you in the store!

Wine Tasting September 23



Let's sample some fresh and lively wines from sunny Sicily, at Pierce's Store on Friday September 23, from 4pm to 6pm. ~Sandy Bragg



Pierce's Store Chili Cookoff

Saturday, October 1

5:30pm - 7:30pm

Rain or Shine

The Pierce's Store Chili Cookoff is a FUNd-raising event. All proceeds will help support the operation of the Store as a non-profit Co-Op serving our community.

We are excited to be hosting a Chili Cookoff. This will be a fun opportunity for all you chili chefs to share your creativity and your favorite recipes, and for all who attend to sample the amazing chili offerings that our chefs prepare. There are all kinds of chilis: Texas, Cincinnati, Vegan, Red, White, Green, with beans, without beans... All are welcome!!!

Chefs will bring a favorite recipe to share, and tasters will sample them all and pick their favorites. The event will be in the Garage next to the store. Please let us know if you'd like to volunteer to help the day of the event.

How it works

Chefs – Entry fee is \$10 – Bring at least 1 gallon of your favorite recipe in a crock pot or heated chafing dish. Chili should be heated in advance so that it's ready to taste. The Store will provide electrical outlets for your crockpots (set on low). **Please register by September 24**

This will help us ensure that we have everything set up and ready. Sign-up is easy - just visit Pierce's Store or mail your registration and a check for \$10 to:

Chili Cookoff, c/o Pierce's Store
2658 Northam Road
Shrewsbury, VT 05738.

Checks should be made out to Pierce's Store. Rules and details are available at the store, or request by e-mail from: pierceschilicookoff@gmail.com

Tasters –Entry fee is \$10. Everyone who shows up to taste is an event Judge. Tasters will get to taste each of the chilis and vote for their favorites! The Store will provide biodegradable utensils and cups for tasters to sample chili.

Prizes – BRAGGING RIGHTS... and also:

\$25 Pierce's Store gift certificates

1st place - \$25 2nd place - \$15 3rd place - \$10

Soft drinks, beer, and wine will be sold at the event.

E-mail questions, or if you'd like to volunteer,:
pierceschilicookoff@gmail.com

To: Postal Patron

Donors are recognized for the remainder of the calendar year in which their donation is received. The Times is mailed to all residents of Shrewsbury and is also available online at the Town website. The cost of printing and mailing is made possible through advertising and your donations which are very much appreciated! Donations can be mailed to: Times of Shrewsbury, P. O. Box 373, Cuttingsville, VT 05738. **THANK YOU!**

Larry & Lauren Abelman
Gary & Minnie Arthur
Roy Arthur
Steve Banik & Virginia Gundersen
Randell & Diane Barclay
Michael & Elizabeth Bedesem
John & Mary Beerworth
Nancy Bell
John & Linda Berryhill
Ludy Biddle
Rich & Cynthia Biziak
Dave & Debbie Blecich
Sandy & Kristi Bragg
Daniel & Virginia Buckley
Bruce & Liz Bullock
Jim Bulno
Carol Calotta
John & Linda Calotta
Herb Carrara
Jamie & Catherine Carrara
Larry & Lila Carrara
Michael & Laura Cashel
Connie & John Cioffi
Christina Clarke
Peter & Theresa Clarke
Scott & Lindsay Courcelle
Douglas Crowe & Amanda Ciaccio
Marilyn Dalick
Sally Deinzer
Rosemarie Pluss Dobler
Linda & Phillippe Ducrot
Stan & Louise Duda
Wayne & Lizzie Emmons
Nils & Pamela Ericksen
Kathi & Timothy Faulkner
Gene & Kathy Felder
Chuck & Luisa Finberg
David & Jo Fretz
Scott Garren & Heather Shay
Jonathan Gibson & Eliza Mabry

Richard Gile & Sue Brown
Mark & Carol Goodwin
Peter & Pam Grace
Barry & Barbara Griffith
John & Betty Heitzke
Betsy Hinckley
Bob & Connie Hoelscher
Carmine Iannace & Rita Gyls
Martha Herbert Izzi
Jeffrey & Diane Jakobsen
Jack & Betsy Jesser
Ellen Jorgensen
James & Laura Keller
Robert & Judith Landon
Marcos & Turiya Levy
Mark & Connie Mackintosh
Ed & Clare Mangine
Gerry & Chryl Martin
Stephen & Patricia Martyn
Taffy Maynard
Lynn McDermott
Michael & Jennifer McDermott
Mill River Unified Union School District
Jeff & Pam Monder
Moody Family
Jack & Joan Mulqueen
Raymond & Cheryl Noble
Trish Norton
Fran Patten
Jack & Sharon Perry
Roxanne Ramah
Ed & Adrienne Raymond
Russ & Donna Reay

Reinbow Riding Center
Helen & Andy Richards-Peelle
Ridlon Family
Nathan Rudisill & Carrie Clancy
Ed & Judy Ryan
Thomas & Donna Ryan
Gary & Margery Salmon
Susan Savage & Irvin Gordon
Wendy Savery
Brian & Patricia Sedaille
Paul Sgalia & Victoria Arthur
Alan & Linda Shelvey
Shrewsbury
Community Church
Conservation Commission
Cooperative at Pierce's Store
Historical Society
Library
Outing Club
Volunteer Fire Department
Sirjane Family
Donna Smith
Bob & Sally Snarski
John C. Stewart II
Tim and Nancy Stout
Dirk & Judith Thomas
Paul & Sarah Titterton
Cady & Beau Tudzarov
Liesbeth van der Heijden
Ann Vanneman
Lana Vanucchi
Howard & Deborah Weaver
Michael & Phyllis Wells
Nancy & James West
Christel Wiedmann
Lee Wilson
William and Peggy Wilson
The Winkler Family
Mark & Connie Youngstrom

